

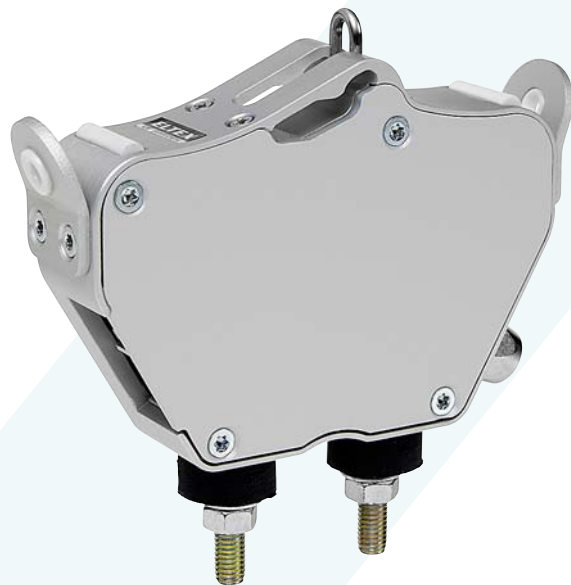
# Eltex Tension Monitor, ETM Solo

The Eltex ETM Solo is an on-line device designed for continuous monitoring of the yarn tension on textile machines.

The ETM Solo communicates via a digital bus system or an analog output.

The yarn tension is measured as a force on the sensing element. The yarn angle across the element is predetermined by two ceramic guide bars. The necessary deviation is kept as small as possible. The yarn guides allow the yarn to enter and leave the unit at any angle.

Fast sensor response enables monitoring of rapid changes in yarn tension. This allows it to be used, for instance, as a sensor for automatic control of yarn brakes.



## ■ Features

- Monitors the yarn tension continuously
- The yarn can enter and leave the sensor at any angle
- Robust design
- Replaceable guide eyelets
- LED for status indication

## ■ Application examples

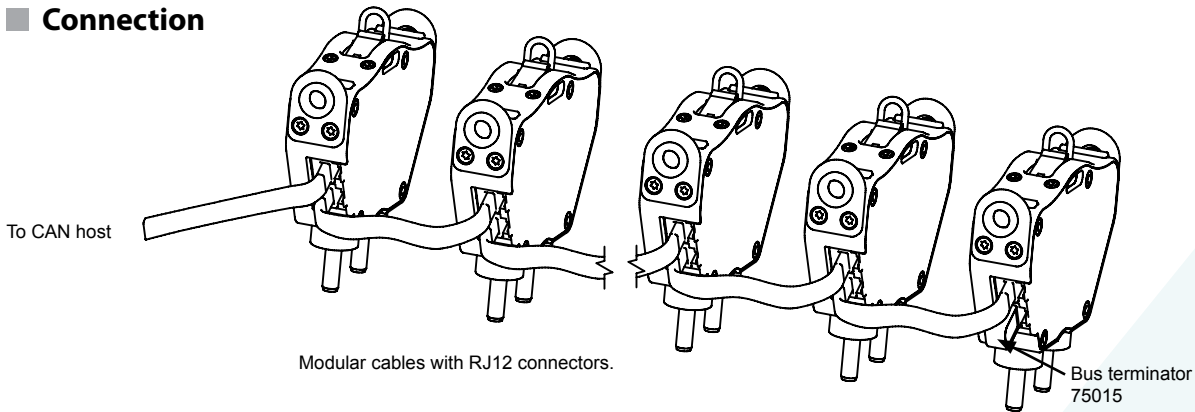
- Weaving, warping, winding machines
- Sensor for brake control

## ■ Advantages

- Improves production efficiency
- Improves production quality
- Simplifies setting of the yarn brakes
- Allows repeated style changes more efficiently and accurately
- Flash memory technique – future software upgrade possible
- Overload protection downwards and upwards
- Easy wiring with common cables/connectors



## ■ Connection



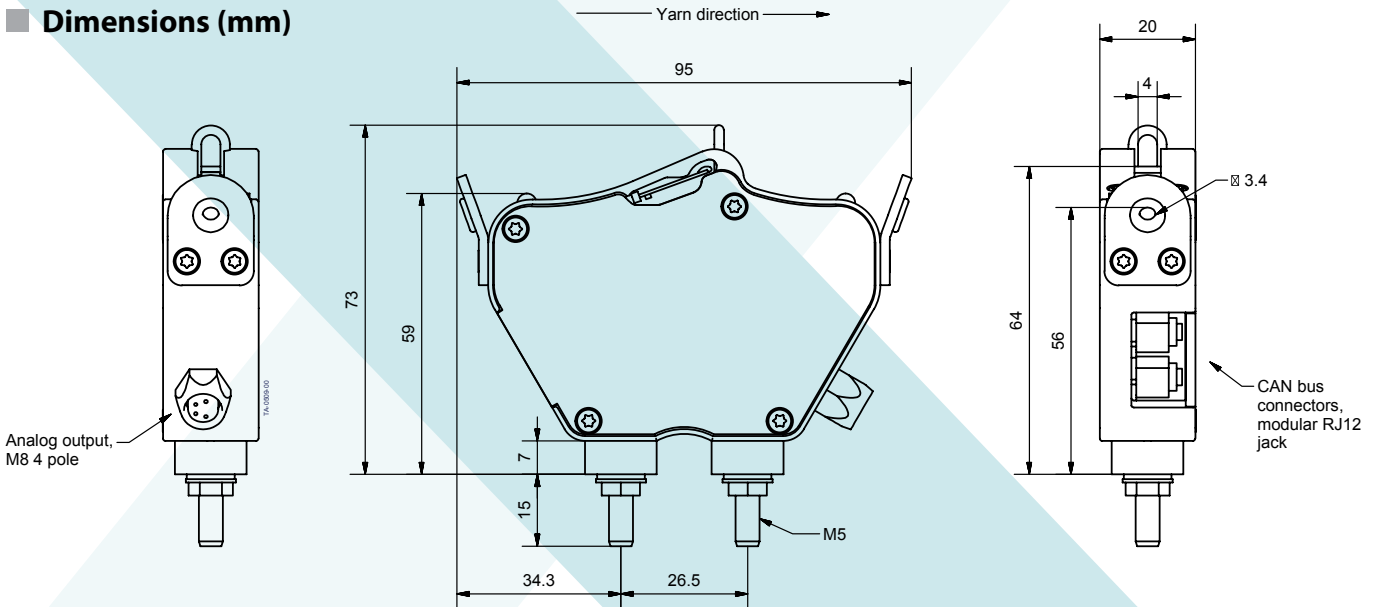
## ■ Technical features

Supply voltage	10–26 V DC
Maximum current consumption	80 mA
Yarn tension range	0–1000 cN
Resolution	< 1 cN
Accuracy	±1.8% of full range
Band width	1 kHz
Ambient working temperature	+10–40°C
Communication	digital via CAN bus and analog 0–5 V DC
Bus connection	maximum 16 sensors on each bus
Dimensions	90 x 72 x 20 mm + screws

## ■ Models

- 56004** Yarn tension sensor single channel, 1000cN, 500kbit CAN, analog output 0-5 V, M8 connector
- 56007** Yarn tension sensor single channel, 1000cN, 1Mbit CAN
- 56074** Yarn tension sensor single channel, 2500cN, 500kbit CAN, analog output 0-5 V, M8 connector
- 56075** Yarn tension sensor single channel, 2500cN, 1Mbit CAN, analog output 0-5 V, M8 connector

## ■ Dimensions (mm)



Patents: SE 517300, Europe 1005435

Declaration of Conformity according to the EMC Directive 89/336/EEC: EN61000-6-4, EN61000-6-2  
We reserve the right to modify the design without notice.

**ELTEX**  
OF SWEDEN

Box 24, SE-283 21 OSBY, Sweden | Tel: +46 479 536300 | Fax: +46 479 536399 | Email: info@eltex.se | www.eltex.se

### Eltex U.S., Inc.

13031 E. Wade Hampton Blvd.,  
GREER, South Carolina, 29651, USA  
Tel: +1 864-879-2131 | In US toll free: +1 800-421-1156  
Fax: +1 864-879-3734  
Email: sales@eltexus.com

### Eltex Manufacturing Ltd.

Railway Road,  
TEMPLEMORE, Co. Tipperary, Ireland  
Tel: +353 504-314 33  
Fax: +353 504-310 02  
Email: info@eltex.ie

### POLSA-ELTEX, S.L.

Zamora, 103 – entlo 3o,  
ES-08018 BARCELONA, Spain  
Tel: +34 93 309 00 17  
Fax: +34 93 309 59 45  
Email: polsa@infonegocio.com

### Eltex China

China Textile Information Center  
12, East Chang An Street, China  
Beijing, 100742  
Tel: +86 10 85229712  
junxian@fabricschina.com.cn